

MARINETECH

NOTIL

NYPHEA OIL TRAWLER INSTANT LAUNCH

Your new pollution response solution

One of the most safe and cost-effective solution in the world...

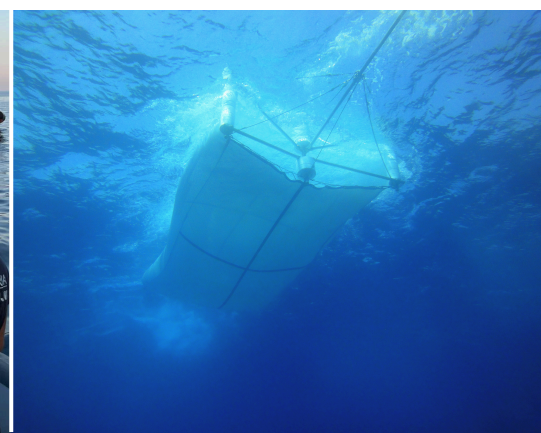
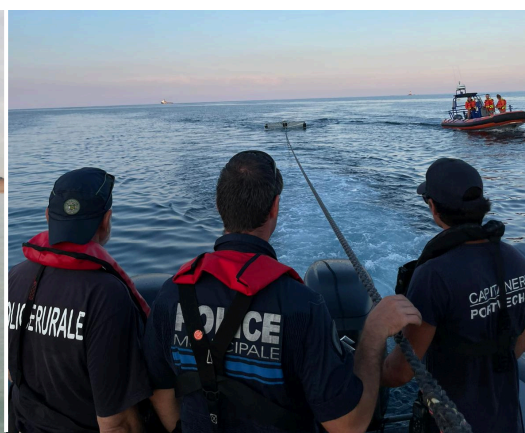
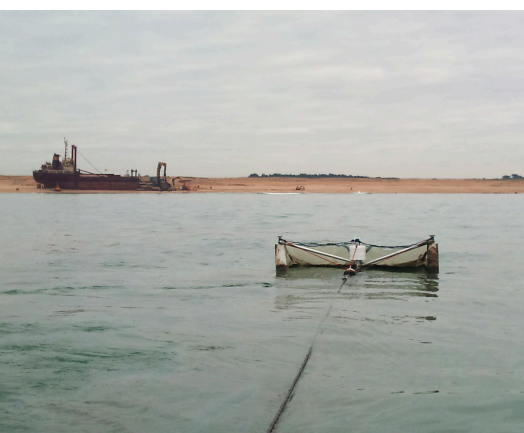
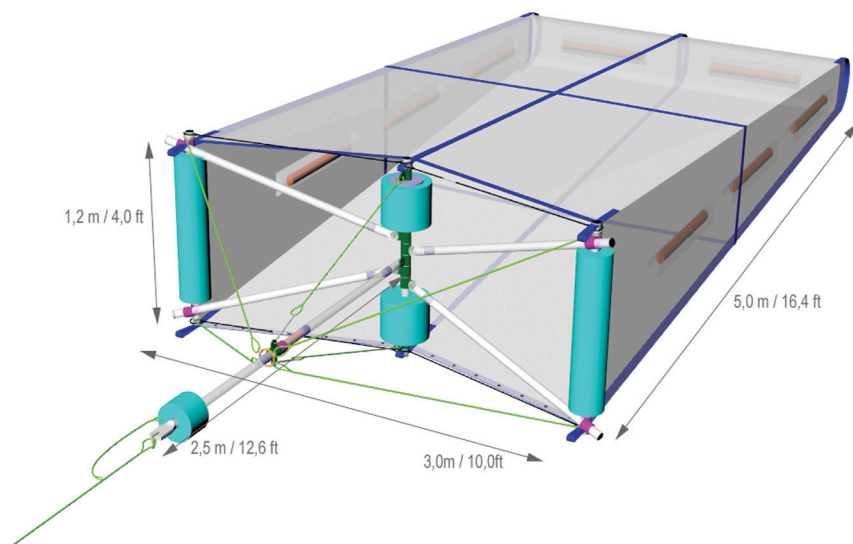


Applications :

- Oils.
- Plastic waste.
- Algae and organic debris.

Caractéristiques :

- Trawling capacity : up to 10 m³.
- Light and compact : 50 kg.
- Boat with engine > 50 HP.
- Automatic deployment by pulling the vessel.
- Easy emptying from the rear of the net.
- Cleanable and/or interchangeable net.
- 100% recyclable materials.
- Air transportable.





Automatic Deployment :

0 sec.

NOTIL is launched
in the water such that
it has been packed.

1 sec.

3 sec.

Once the boat moves
forward, the dynamics
of the system will open
NOTIL like an umbrella.

4 sec.

NOTIL is ready.
The deployment took
5 seconds.

5 sec.